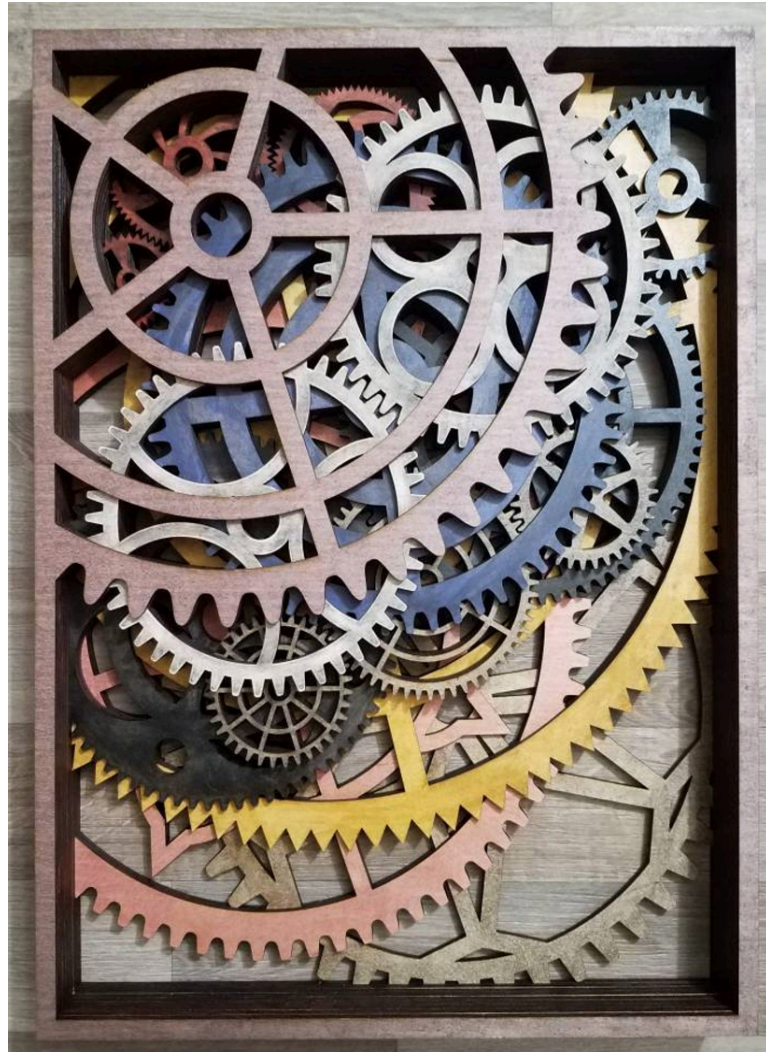


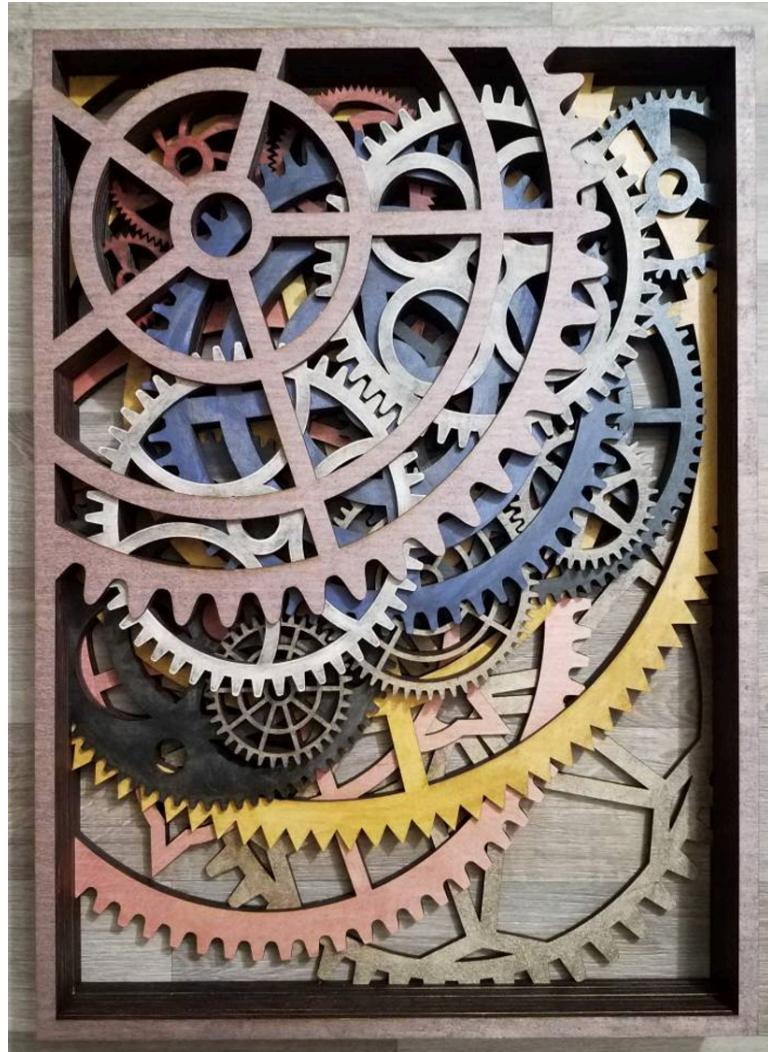


- Christopher Myles,  
American
- *Mess of Gears*
- Date not given
- wood, glue, stain,  
plywood
- 23.5 x 17.5 x 2  
Inches

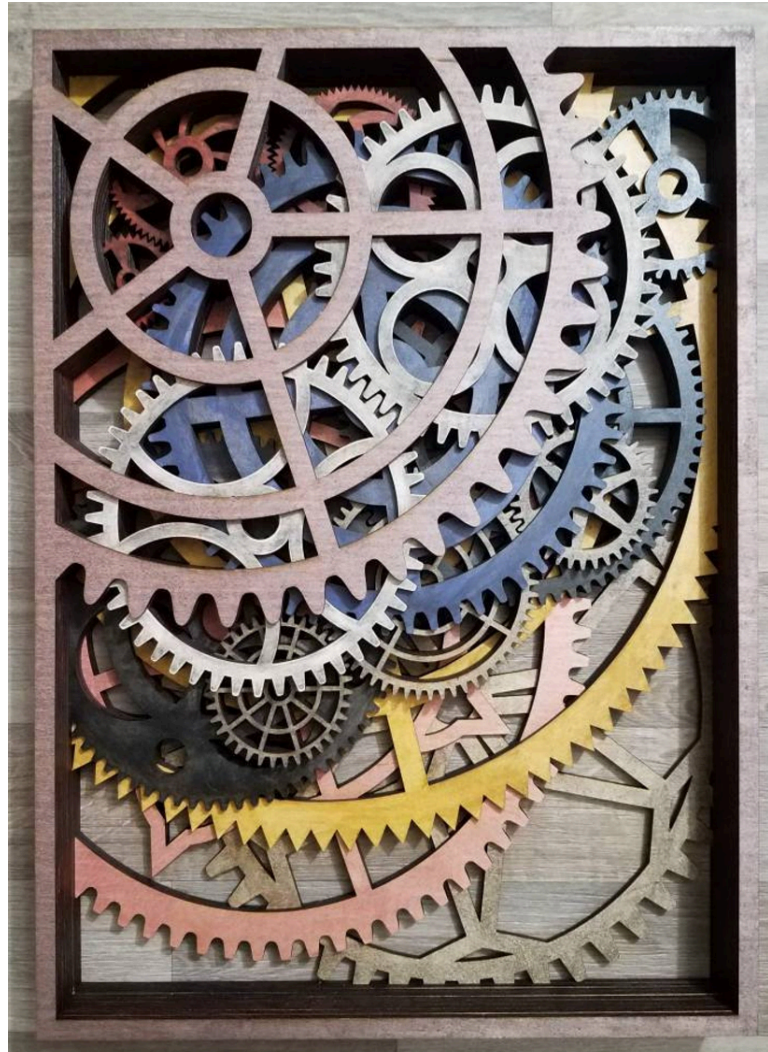


- DESCRIBE the group of shapes the artist used in this work.

- Write your answer using complete sentences with supporting details.

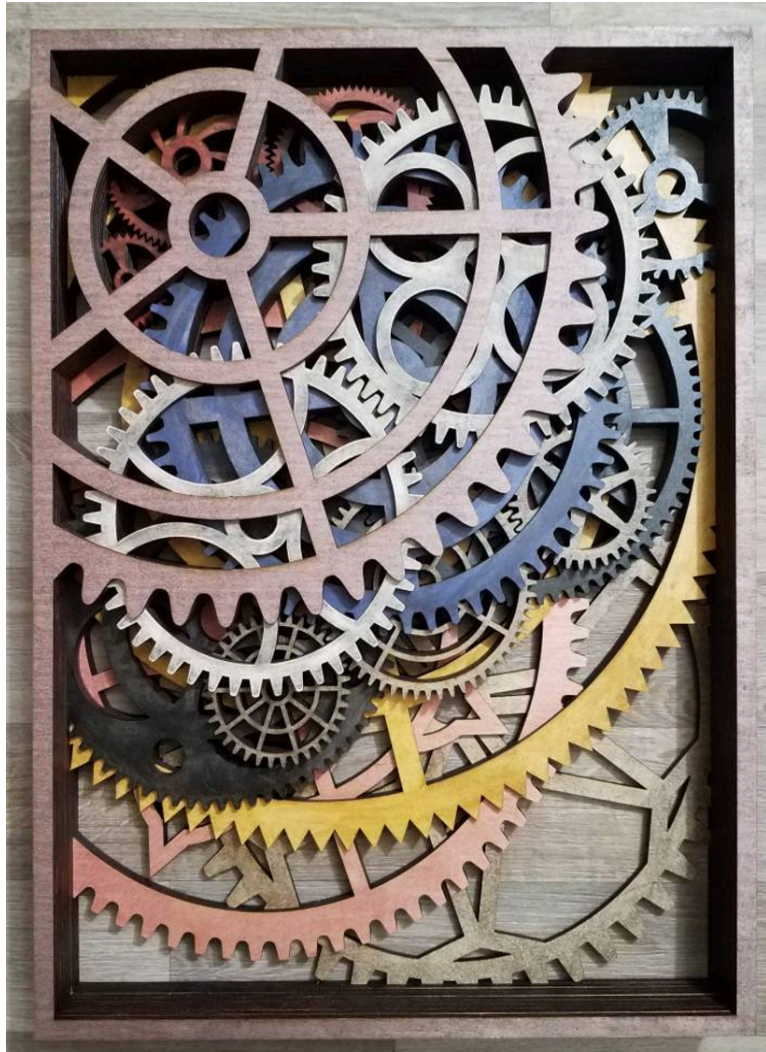


- **ANALYZE** the use of repetition in this work.
- Write your answer using complete sentences with supporting details.



- INTERPRET  
what was the  
artist trying to  
say in this  
work.

- Write your answer  
using complete  
sentences with  
supporting details.



- **JUDGE** the cutting skills of the artist.
- Write your answer using complete sentences with supporting details.