

ELEMENTS OF ART

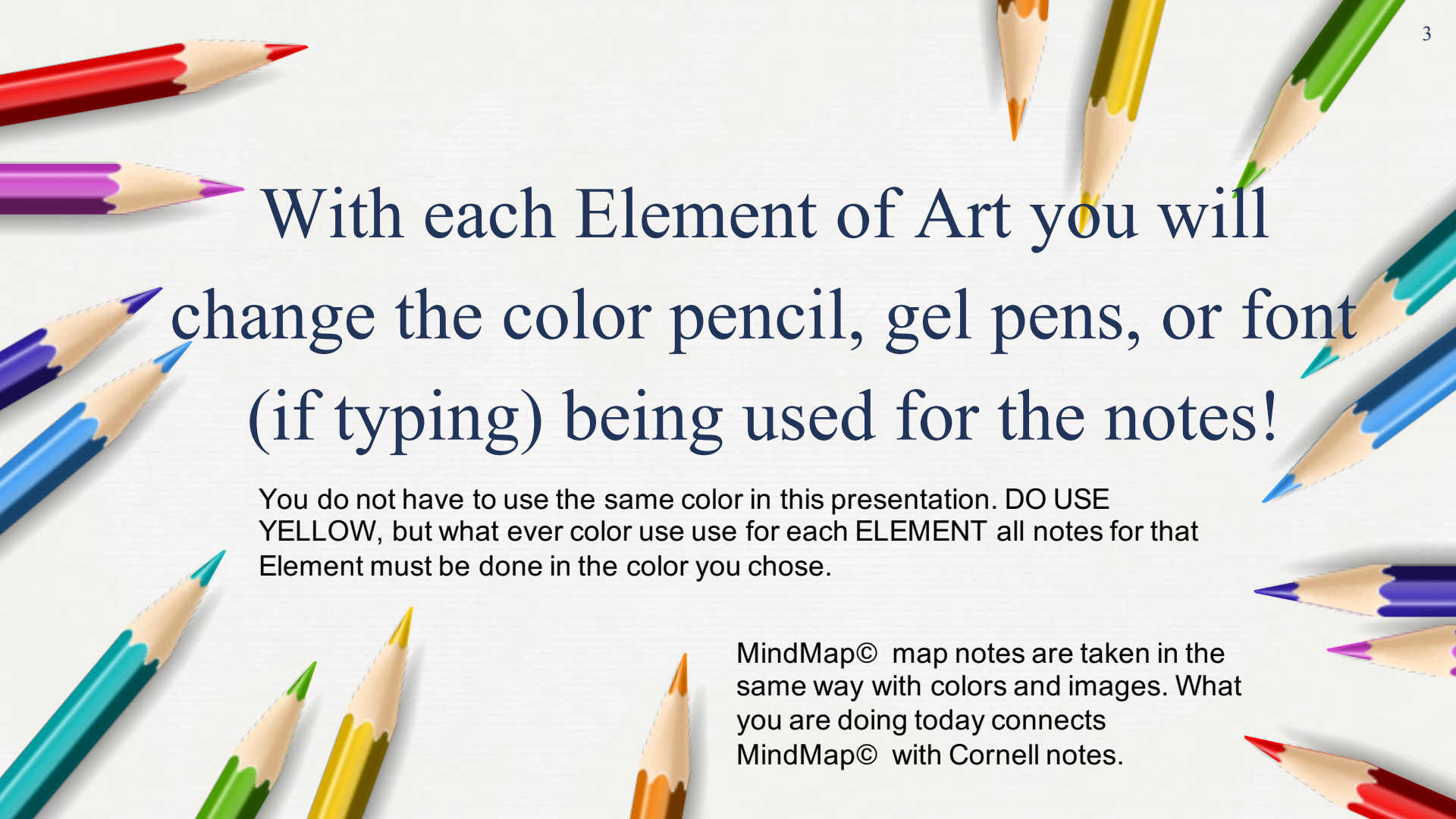
Cornell notes



You will be using your “Elements of Art” worksheet to take notes from this presentation.

YOU MUST USE COLOR PENCILS or color gel pens for these notes.





With each Element of Art you will change the color pencil, gel pens, or font (if typing) being used for the notes!

You do not have to use the same color in this presentation. DO USE YELLOW, but what ever color use use for each ELEMENT all notes for that Element must be done in the color you chose.

MindMap© map notes are taken in the same way with colors and images. What you are doing today connects MindMap© with Cornell notes.

LINE



Definition: A mark made with a moving tool; The path of a dot through space.

LINE

Select a color pencil or gel pen to take your notes. May be any color except yellow. If typing on a computer select a color for your font.

LINE



Definition: A mark made with a moving tool; The path of a dot through space.

LINE	Quality:	Thin and thick	
		Implied	
	Directions:	Vertical (Strong)	
		Horizontal (weak)	
		Diagonal (falling)	
		Curved	
		Zig-Zag (excitement)	
	Dimension - ONE	Length	

SHAPE



Definition: A closed line.

SHAPE			

Select a new color to take your notes. May be any color except yellow or a color already used for this worksheet.

SHAPE



Definition: A closed line.

<h2>SHAPE</h2>	<p>Dimensions Two</p>	<p>Length & Width</p>	
	<p>Group- Geometric Math based</p>	<p>Examples Circle, Rectangle, Square, Triangle, all Polygons etc.....</p>	<p>In this space you will add your own illustrations. You may not just copy</p>
	<p>Group- Organic/ Freeform</p>	<p>Examples People Tree Flowers <u>You must add other examples In your notes!</u></p>	<p>the illustrations in this presentation!</p>

FORM



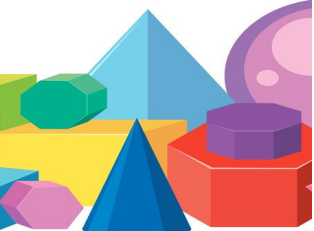
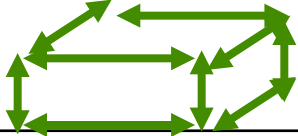
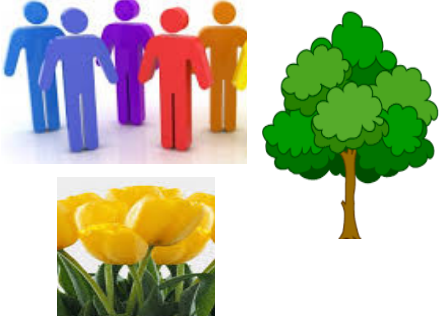
Definition: A 3 Dimensional object.

FORM	Select a new color to take
	your notes. May be any
	color except yellow or a
color already used for this	
worksheet.	

FORM



Definition: A 3 Dimensional object.

<p>FORM</p> 	<p>Dimensions Three</p>	<p>Length & Width & Depth</p>	
	<p>Group- Organic/ Freeform Think nature</p>	<p>Examples People Tree Flowers <u>You must add other examples In your notes!</u></p>	<p>In this space you will add your own illustrations. You may not just copy the illustrations in this presentation!</p>

SPACE



Definition: The area around an object or the area taken up by an object.

SPACE

Select a new color to take your notes. May be any color except yellow or a color already used for this worksheet.

SPACE



Definition: The area around an object or the area taken up by an object.

SPACE



Type 1

Positive
occupied

The area that is
taken up by an
object

In this space you
will add your own
illustrations. You
may not just copy
the illustrations in
this presentation!

Type 2

Negative
unoccupied

The area that is
taken up around
an object

TEXTURE







Definition: How something feels like or looks like it will feel.

TEXTURE	Select a new color to take your notes. May be any color except yellow or a color already used for this worksheet.
----------------	--

TEXTURE



Definition: How something feels like or looks like it will feel.

<h2>TEXTURE</h2>  	<p>Type 1</p> <p>Tactile</p>	<p>Put in an illustration to remind you of term tactile</p>	<p>Write in some types of textures and image of items that go with those textures in this column.</p>
 	<p>Type 2</p> <p>Visual Implied</p>	<p>Put in an illustration to remind you of term Visual</p>	<p>Write in some types of textures and image of items that go with those textures in this column.</p>

VALUE



Definition: The lightness or darkness of items in art.

VALUE

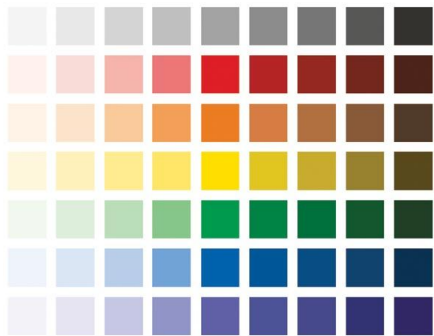
Select a new color to take your notes. May be any color except yellow or a color already used for this worksheet.

VALUE



Definition: The lightness or darkness of items in art.

VALUE



HUE

1. Tints

2. Shades

Define each value term

1. Light



2. Dark



Make a small value chart of one color in this area.

COLOR



Definition: Color in art refers to reflected light.


COLOR

Select a new color to take your notes. May be any color except yellow or a color already used for this worksheet.

COLOR



Definition: Color in art refers to reflected light.

<h2>COLOR</h2> 	Properties	
	You will create a full worksheet for this Element of Art	

You have now finished your written part of the Cornell notes.

Now you need to add your own illustrations to help you remember the notes.

When finished, turn in your paper or upload your work into Focus for grading!

